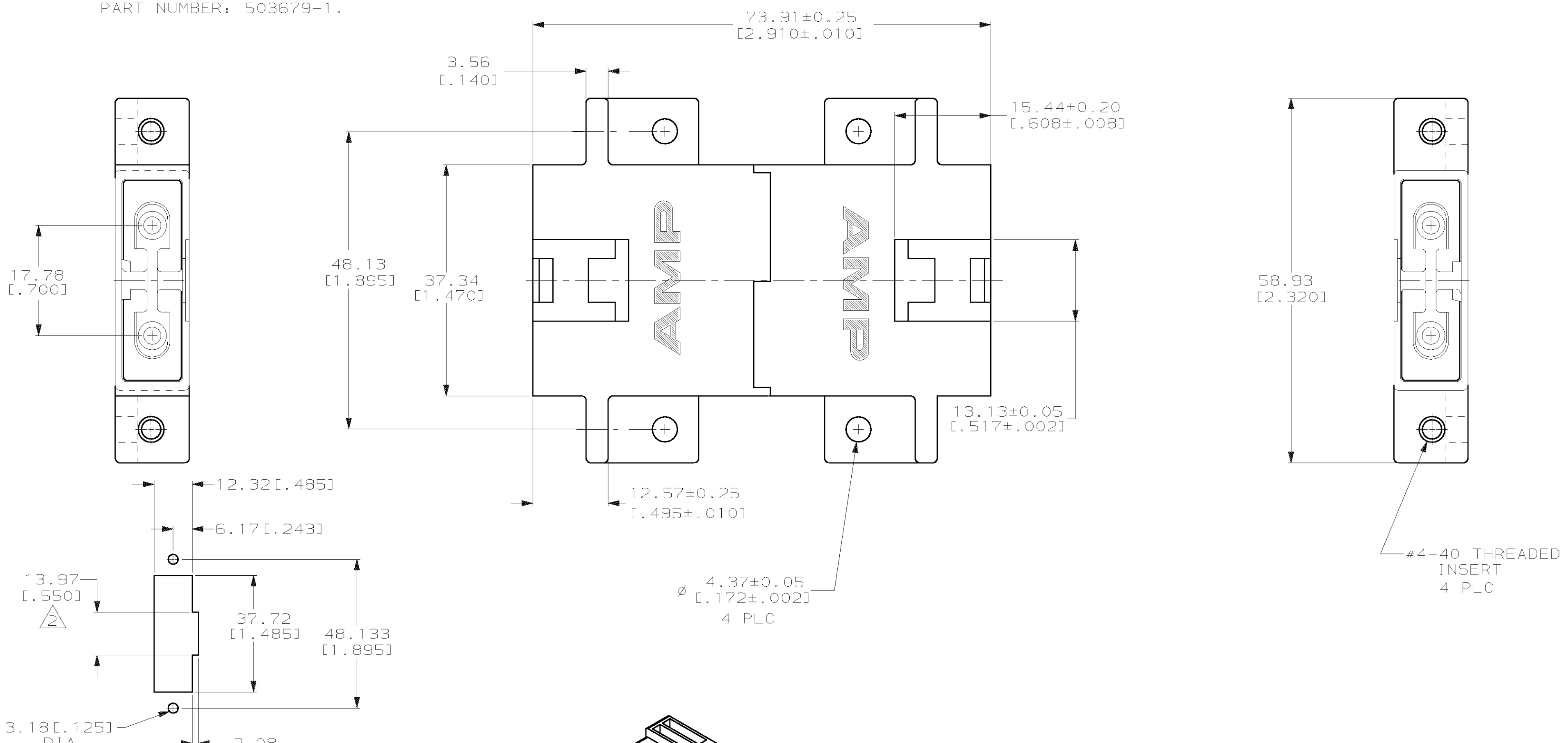


THIS DRAWING IS UNPUBLISHED. RELEASED FOR PUBLICATION
 © COPYRIGHT 19 BY AMP INCORPORATED. ALL INTERNATIONAL RIGHTS RESERVED.

LOC		DIST		P		F		ZONE		LTR		REVISIONS			
CE	16														
												DESCRIPTION	DATE	APPD	
												C	REVISED PER 0A00-0124-00	22JAN2001	TA/SB

1. DIMENSIONS IN [] ARE IN INCHES.
 2. OPTIONAL CUTOUT FOR FIELD KEY INSERTION AND REMOVAL. KEY EXTRACTION TOOL PART NUMBER: 503679-1.

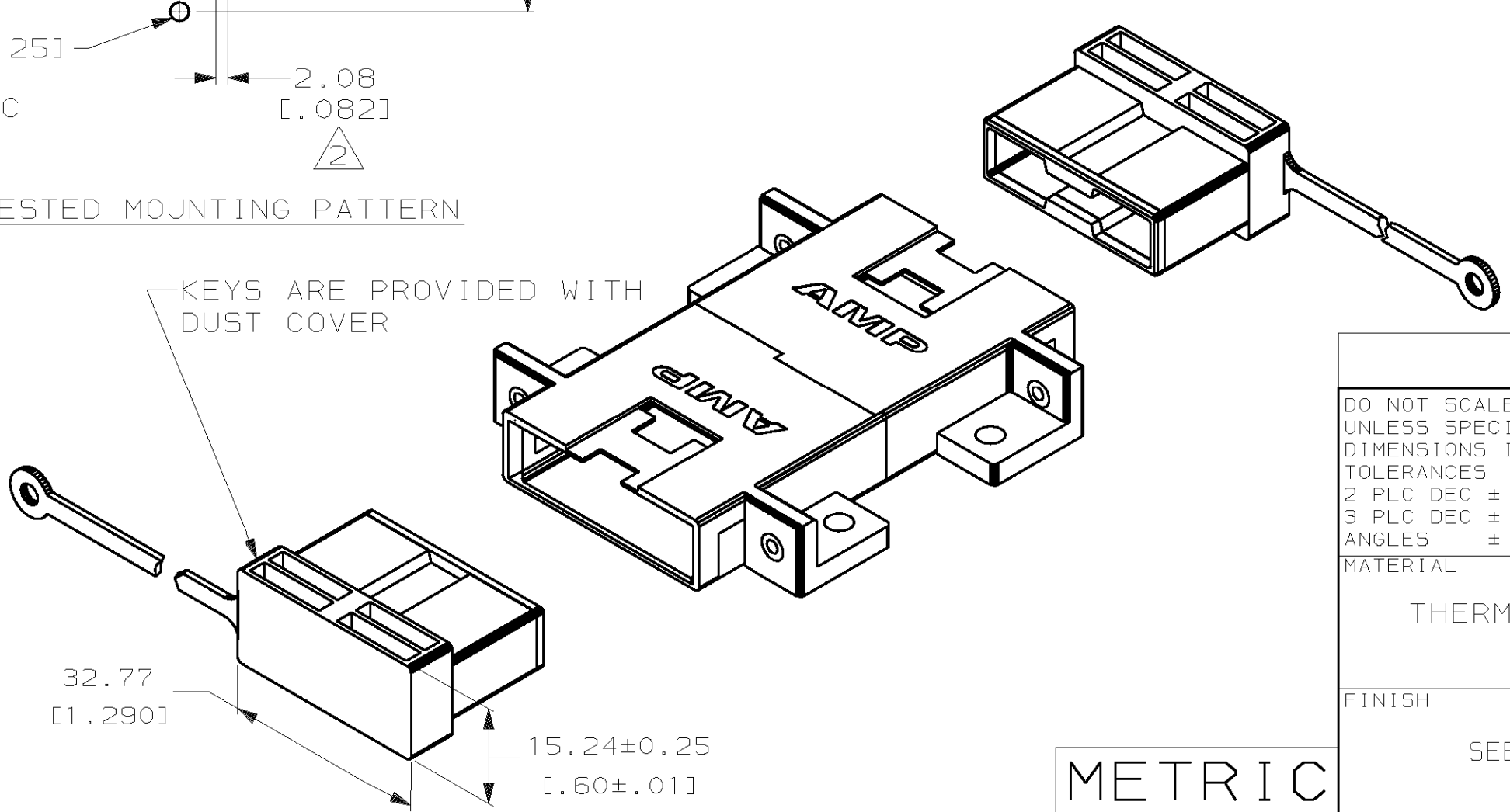


#4-40 THREADED INSERT
4 PLC

SUGGESTED MOUNTING PATTERN

KEYS ARE PROVIDED WITH DUST COVER

	BEIGE	CERAMIC	502806-4
OBSELETE	BLACK	CERAMIC	502806-3
	BEIGE	METAL	502806-2
OBSELETE	BLACK	METAL	502806-1
	COLOR	ALIGNMENT SLEEVE MATERIAL	PART NUMBER



DO NOT SCALE PRINT. UNLESS SPECIFIED DIMENSIONS IN mm TOLERANCES ON : 2 PLC DEC ± 0.13[.005] 3 PLC DEC ± - ANGLES ± -		DR 10-12-92 R.HILEMAN		AMP AMP INCORPORATED Harrisburg, Pa. 17105	
MATERIAL THERMOPLASTIC		CHK 10-14-92 T.FAWCETT			
FINISH SEE TABLE		APPD 10-14-92 T.FAWCETT		NAME	
		APPD 10-14-92 D.FISHER		FSD TO FSD COUPLING ASSEMBLY, FIELD KEYABLE, MULTIMODE, AMP FSD	
		APPLICATION SPEC		SIZE	FSCM NO
		WEIGHT -		C	00779
				SCALE	DRAWING NO
				2:1	502806
					SHEET 1 OF 1

METRIC